

Welcome to Delves Lane Primary School Early Years



Information for Parents September 2021



Meet the Staff



Mrs B. Woods
Head Teacher



Miss H. Webb
Deputy Head Teacher



Mrs A. Randell
Early Years Leader
Reception Teacher



Mrs K. Moody
Nursery Teacher



Miss K. Taylor
Nursery Teacher



Mrs S. Beauvoisin
Reception Teaching Assistant



Miss C. Stubbs
Teaching Assistant – 2-Year-
Old Co-ordinator



Mrs J. Clark
Nursery Teaching Assistant



Mrs A Shaw
SENCO

Aims, Ethos and Vision

Learn, Achieve, Inspire

In our school we:



We achieve this through our aims: -

- Promote strong community links and a secure sense of belonging.
- Provide a safe, welcoming, caring environment in which each individual is valued and learning can flourish.
- To provide a stimulating and creative curriculum which develops children's love of learning.
- Inspire a sense of co-operation, self-discipline and responsibility.
- A commitment to develop lively, enquiring minds and the ability to question and discuss rationally.
- Encouraging the enjoyment of physical activities and games and increasing awareness of the importance of healthy living.
- Enable children to understand and appreciate the world in which they live and develop sensitivity towards individuals, groups and nations within it.



Welcome to Delves Lane Primary School and the Foundation Stage of your child's education. This booklet is intended to help you talk to your child about starting Nursery or Reception so that you can prepare for this next exciting step in your child's life. We believe that parents and the wider family are the child's first teachers and we hope that close collaboration between school and home will help your child feel secure at Delves Lane and give you the confidence in us as carers for your child.



What is the Foundation Stage?

The Foundation Stage is the British Governments label for education for children aged 0 to 5 in England. The Foundation Stage is made up of 7 areas of learning and development. All areas are connected to one another and are equally important. They are:

Prime areas:

- *Personal Social Emotional Development**
- *Communication and Language**
- *Physical Development**

Specific areas:

- *Literacy**
- *Maths**
- *Understanding of the World**
- *Expressive Art and Design**



To support your child's development, we also observe the way that your child engages in activities and how they learn. Through our provision and planning, we aim to support them in becoming independent learners. The 'Early Years Foundation Stage' Framework and Profile require us to report on the following **Characteristics of Effective Learning** at the End of Reception:

- * Engagement – Playing and Exploring**
- * Motivation - Active Learning**
- * Thinking – Creating and Thinking Critically**

For more information, see the - Parents' Guide to the Early Years Foundation Stage Framework.



How it works?

Our Early Years consists of a Nursery class (AM & PM) alongside 2-Year-Old Provision and 2 Reception classes.

Nursery has 1 indoor area and 1 outdoor area.



Reception this year consists of a classroom and an outdoor area. We share our room space with nursery but are separate.



All these areas are secure and supervised at all times. We operate a free flow system. This means that children can move freely between these areas, indoors and out, as they choose.

Nursery will be able to access both their indoor and outdoor areas during their 'child-initiated' time as both areas will be supervised by a member of staff at all times.

Reception children will be able to access the classroom and outdoor area during 'child-initiated' time as these are again staffed at all times.



How children learn

In the Early Years children learn through play. We recognise that children learn best when they are interested in what they are doing. The Early Years staff consistently observe children in their play to identify these interests. Staff then plan activities to enhance and develop this interest.

Children learn in a variety of ways:

Carpet sessions

There are times in the day when the children will be brought together with their class to be introduced to new skills.



Focussed Activities

The skills that are introduced during the carpet sessions are reinforced in small groups led by an adult. These activities are carried out daily and can take place in all areas of the environment. These activities are closely linked, where possible, to children's interests.



Child initiated activities

When children are not on the carpet or taking part in a focussed activity they are able to follow their own interests by accessing any area of the Early Years. In these areas activities and experiences are planned to challenge children which encourages them to become independent learners.



Our school day

The school starts every day at 8.50am. Children in Nursery are dropped off and collected from their Classroom door at the bottom of the steps. Children in Reception are dropped off and collected from their classroom door which is accessed via the nursery yard. The playground gate will be locked until the doors open to ensure safety and prevent any children using the outdoor equipment unsupervised.

Rhythms of the Day – Nursery and 2-year-old Session times

Nursery AM:

8.45 – 8.55 – Dropping off time

9.00 – 9.15 – Carpet session

9.15 – 11.15 – Activity time – focussed activities, snack time and child initiated play will take place.

11.15 – 11.30 – Carpet session

11.45 – Home time – staff are available to chat informally at this time.



Nursery PM:

12.15 – 12.25 - Dropping off time - staff are available to chat informally at this time.

12.30 – 1.00 – Activity time - focussed activities and child initiated play will take place.

1.00 – 1.15 – Carpet session

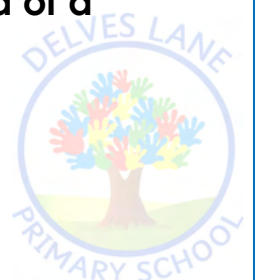
1.15 – 3.00 - Activity time – focussed activities, snack time and child initiated play will take place.

3.00 – 3.15 – Carpet session

3.15 – Home time – staff are available to chat informally at this time.



Staff are available to chat informally at the beginning or end of a nursery session.



2 year olds

We can now offer places to eligible children in the term after their second birthday. Eligible children are entitled to 15 hours of Nursery provision which we can offer as a morning or afternoon session, 5 days a week, following the same timings as our Nursery sessions. We have 4 spaces available in each morning and afternoon session.



The children in our two-year-old Nursery play and explore within the Nursery indoor environment and have their own separate outdoor area with equipment suited to their needs. The areas have been very carefully designed and adapted to meet the developmental needs of all of our children. All children are fully integrated and are able to form strong relationships with both staff and children which will last through their early year's journey with us.



There are many opportunities for the sensory and messy play that is vital at this stage of development. We ask that you provide your child with extra clothes to keep in school to aid this.

To find out if you are eligible, please see advice from the Durham County Council website below:

How to apply

During the school term that your child turns two, if you qualify for these sessions, we'll write to you. This will be your 'golden ticket', and will include an eligibility code.

Take this code to your chosen nursery or childminder who will check your code and tell you when your child can start.

Rhythms of the Day - Reception Session times

Reception AM

8.50 – Children are collected from the yard by their class teacher

9.00 – 9.20 – Carpet session (Phonic based)

9.20 – 10.15 - Activity time - focussed activities, and child initiated play will take place.

10.15 – 10.35 – Carpet session (Maths based)

10.35 – 11.40 – Activity time - focussed activities, and child initiated play will take place.

11.40 – 12.00 – Literacy (story based)

12.15 – 1.00 – Lunch – children have lunch from **12.15 then go out to play with the rest of the school.**



PM

1.00 – 1.20 – Carpet session (topic based)

1.20 – 2.45 - Activity time – focussed activities, 1:1 reading and child initiated play will take place.

2.45 – 3.00 – Carpet session

3.05 – Home time - **staff are available to chat informally at this time.**



School Dinners - Reception

Reception children have either a packed lunch from home or a meal provided by the school. Currently, ALL children will receive a free meal regardless of income as long as parents complete the application for Free School Meals Form found in your packs. The office must be told of changes from packed lunch to school dinners or vice versa.

If your child has any food allergies or is not allowed to eat certain foods for any reason, please inform a member of staff.



Children are encouraged to use a knife and fork independently to eat their lunch, though staff are on hand to assist with this. You could support your child by encouraging them to practise using their knife and fork over the Summer holidays before they begin reception.

Children eat their lunch with their friends in the shared dining hall and are supervised by school staff. They then go outside to play with the rest of our school on our large school grounds. This is called OPAL play.



We learn outside in all weather

At Delves Lane Primary School, we believe there is no such thing as bad weather, only bad clothing! Children gain a lot of learning and experiences playing outdoors come rain, wind, snow or shine! Therefore, it is vital that they are prepared for the weather each day. Please ensure your child has a suitable waterproof coat on rainy days, a warm coat on colder days and plenty of sun cream and a sun hat for warmer days.

We provide children with water proof clothing and wellies for playing in our mud kitchen and splashing in puddles, however accidents do happen and sometimes it's really hard to keep that mud away! Please do not be concerned if your child has had a change of clothes due to mess – we assure you they have had lots of fun!



School Uniform

All children should come to school in school uniform.

This consists of:

- **Navy blue or grey skirt or trousers.**
- **Pale blue polo shirt or blouse.**
- **Navy blue jumper or cardigan.**
- **Suitable shoes (not sandals, Ugg style boots, crocs or laces)**
- **Suitable hairstyles**
- **no patterns in boy's hair**
- **girl's hair tied back with a bobble**
 - **Blue checked dresses and grey shorts are suitable for the summer.**

Please name all clothes and shoes!



PE kit

All children must be provided with a suitable PE kit:

- **Navy blue shorts**
- **blue t-shirt (school emblem preferred)**
- **Black Plimsolls**

PE kits will be kept in school and sent home half- termly. Please do not take them home every day.



Online ordering

You are now able to order our uniform online via:

<http://www.sandnworkwear.co.uk/>

The screenshot shows the S&N Workwear website interface. At the top, the logo 'S&N WORKWEAR and Promotional Gifts' is displayed alongside contact information: TEL: 01207 561 108 and EMAIL: info@sandnworkwear.co.uk. A shopping cart icon indicates '0 item(s) - £0.00'. A navigation menu includes 'School Wear', 'Workwear', 'Corporate Clothing', 'Promotional Gifts', 'Calendars', 'Diaries', 'Stationery', and 'Exhibition Materials'. The current page is for 'DELVES LANE PRIMARY SCHOOL', featuring a tree logo. A link for 'Delves Lane' points to a size guide. The main content area displays eight uniform items in a grid:

Item Name	Price
School Set Navy Blue	£3.18
Sweatshirt (Age 3 - 13)	£7.95
Sweatshirt (Age 13+)	£11.70
Cardigan (3-13)	£8.30
Hoodie - Childrens Delves	
Children's Polo Shirt (2-13)	
Joggers (3-12)	£10.00
Polo Shirt (13+)	£8.16

Uniform can be delivered to a home address for a small charge or delivered to school for free.

Our admin team will then contact you to arrange a collection.

If you are unsure about sizes, please use the contact details at the bottom of the webpage by telephone or email. They are happy to help!



Our curriculum

Children in Nursery and Reception classes follow **Development Matters** and work towards achieving the Early Learning Goals. The national expectation is that most children will reach the early learning goals by the end of their Reception year. However, we know that every child is an individual and will be supported to make progress at his or her own pace. Children with special educational needs will be identified in partnership with parents/carers. There are seven key areas of learning as follows:

The EYFS Curriculum



Personal, Social and Emotional Development

We ensure that each child is a valued member of the class. Through class routines, circle time and celebration of children's achievements, we will promote positive self-image and self-esteem. We need to nurture a positive attitude towards knowledge and enthusiasm for learning, and plan a curriculum that allows each child to succeed. Children should learn how to cooperate with each other, share resources and value each other and learn to take responsibility for their own actions.

At Delves Lane, we follow a whole school PSED curriculum called 'Jigsaw' which runs from Nursery through to Year 6.

Jigsaw equips schools to deliver engaging and relevant PSHE within a whole-school approach. Jigsaw lessons also include mindfulness allowing children to advance their emotional awareness, concentration and focus. It is introduced to early years' children through friendly characters named Jenie and Jerry cat.



How you can help:

- Talk to your child about how they are feeling about starting school and their school day once they begin early years
- Encourage your children to be independent
- Please let staff know any changes or reasons that may affect how your child is feeling

Physical Development

Daily provision is planned and resourced to provide children with opportunities to develop and practise their large, whole body movements. Activities are also planned to support fine motor development, which involves strengthening fingers, wrists and arms. Children increase their understanding of how their bodies work and how they can keep safe and healthy. We follow a fine motor strengthening scheme called 'Dough Disco' which is a weekly exercise to music for the muscles in our hands with our own pot of playdough! You can find videos for this on YouTube by typing: Shonette Bason-Wood dough disco!



How you can help:

- Take your child to the park or play active games with them
- Encourage your children to be independent by dressing themselves
- Ensure children have their PE kit in school



Communication and Language

We feel talk is a vital part of children's early basic skills. Even from a very young age, children are listening to their world around them. It is so important that children are spoken to at every opportunity as this is where they gain their skills – from the adults around them modelling it to them! Children at Delves Lane will have the opportunity to talk and communicate in a wide range of situations, responding and listening not just to adults, but also to each other. They will practise using and extending their vocabulary, and learn to listen carefully. We value the importance of nursery rhymes in developing children's language skills and plan nursery rhymes into our curriculum each week. We also take part in the World Nursery Rhyme week each November.

How you can help:

- Just like we do in school - Model good language when talking to your child and responding to your child's comments.
- Talk, talk and more talk!
- Sing songs and nursery rhymes
- Speak to the Early Years team if you have any concerns about your child's speech and language development.



Literacy

Children will begin to develop their early reading skills in the Nursery where they will be provided with many opportunities to listen and look at books and nursery rhymes. They will learn how to care for books properly and enjoy retelling them in their own words. Reading skills are taught discretely during Phonics sessions. All children participate in a phonics programme in Reception in preparation for reading and writing. Through a carefully planned programme they learn the skills they will need to become readers. Children will learn to write letters, words, labels, captions and sentences over their time in the Early Years.

Reading: Phonics – Sounds-Write

Reception children take part in daily phonics lessons, following a whole school scheme: Sounds-Write. This is where your child will learn all the letter sounds and how to write them. As we learn new sounds, your child will bring home a Phonics Book and sound book so that you can practise what children have learnt at home. We ask that you sign and date the diary when you read at home with your child, and add any comments that you wish. Staff will do the same when they read with your child in school.

A Parent's Meeting regarding the teaching of phonics and how you can support your child will be held in the Autumn term.





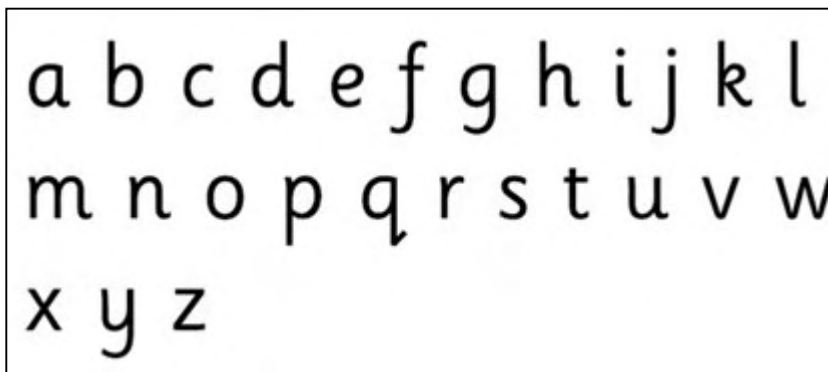
Writing: Talk 4 writing

We follow a whole-school scheme for writing from nursery to year 6 called Talk 4 Writing, developed by Pie Corbett. Talk for Writing is a way of supporting the improvement of children's writing through pictorial images called a story map. It develops children's ability to 'read as writers' and enables them to explore the thinking and creative processes involved in generating and planning ideas and incorporating techniques learned from other writers into their own work. At Delves Lane, each class learns a new story or nursery rhyme every half term. We send our story maps home for children to share with you along with the actions!

Handwriting

There are many opportunities in the Early Years setting for your child to mark make and explore writing. The staff provide pre-writing templates as well as resources to develop letter formation. This occurs through independent, small group and whole class activities. Every child develops their writing at different stages so please do not compare your child to others or worry if they cannot hold a pencil correctly yet. Following termly assessments, children may be identified to take part in a fine motor skills group or additional handwriting activities to support this.

We use a font named Sassoon Primary to support children with their handwriting. This is what it looks like:



How you can help:

- Share lots of stories together
- Read a range of books, comics, signs and labels.
- Look out for print in the environment.
- Encourage your child to help you write shopping lists, cards and notes.
- Support reception children in reading their home reading books and write in their diary when you do
- Practise sounds in sound books
- When children are ready, they could practise writing the letters of their name or tracing over larger letters drawn by you.

Mathematics

Children will have the opportunity to develop their understanding of number, measurement, pattern, shape and space in a range of contexts in order to explore, practise, learn and talk about them. Through a range of activities, we aim to support children in developing the skills they need to independently solve mathematical problems. We also use real contexts and role play to support the development of mathematical concepts, with opportunities to record their understanding in a range of ways.

In Nursery, children will have the opportunity to mark make and use numbers in all areas of their play and will take part in short teacher-led circle time sessions. These sessions are a big focus on number and counting in order.

In Reception, children follow a whole-school maths programme called White Rose. This links really well to the well-loved programme, Number blocks, which really supports children's numerical skills.



How you can help:

- Look out for numbers when out and about
- Lots of counting together and reciting numbers: count the steps, stairs, objects in the kitchen
- Talk about money when you go to the shops and involve your child in using money.

Understanding the World

In this area of learning the children are developing knowledge skills and understanding that help them make sense of the world. Children will be forming basic concepts and understanding that will prepare them for later work in Science, Technology, History, Geography, and RE. Children will have chances to explore and find out about their environment and people and places that have significance in their lives.

At Delves Lane, we use a whole school approach called 'Cornerstones' which runs from Nursery through to Year 6. It encompasses children skills around a particular 'project' each half term. You will be notified of the Topics children will be covering in a half termly newsletter.



How you can help:

- Celebrate and talk about your culture and where you are from.
- Look for signs of nature in the environment and talk about changes.
- Grow herbs and/or vegetables in your garden or on the windowsill.

Expressive arts and design

We aim to give children opportunities to share and explore their thoughts, feelings, observations and ideas through Art, Music, Dance, imaginative and role play activities. Children love to re-enact their experiences through different role play scenarios and we ensure that each Early Years classroom has a well-resourced role play area to allow children to express themselves. Children love to play the role of the adult and often mimic their parents in the kitchen at home.

At Delves Lane, we also value the importance of Dance in our curriculum and each Spring Term we hold a 'Dance Festival' where children from Nursery to Year 6 rehearse and perform a dance of their choice.



How you can help:

- Sing songs and dance to music together.
- Do art activities at home
- Engage in pretend play: you might pretend to be a shopkeeper or doctor together – even Mums and Dads is a popular activity!

Special Educational Needs

We recognise that all children have individual needs, and that there may be times when a child's specific needs require a particular approach or programme of support. A child may have special needs in one area of learning, speech and language development, emotional, social, physical, medical or behavioural difficulties, or a combination of these.

We also recognise children's needs change as they develop, and therefore some children may only require a temporary programme of support. In order for the school to meet the individual needs of all pupils, we place a great deal of importance on the identification of children's needs in the early stages of their school life. Communication between home and school is essential. We welcome and value the information you are able to give us about your child. We encourage parents to approach their child's class teacher to discuss any concerns, the school's Special Needs Coordinator, Mrs Shaw, is also available to discuss concerns and give advice. Class teachers will inform parents of any concerns they have.



English as an Additional Language

At Delves Lane, we have many children for whom English is not their first language. We are aware of the initial specific needs of children who have a first language other than English. As well as creating a curriculum which ensures that these children are able to have full access to learning, we also see the range of languages spoken by children as an asset to the school and we celebrate the diversities of languages and cultures that are represented in our classes.

Childcare Provision

At Delves Lane Primary School, our child care offers are as follows:

- **Breakfast** club from **7.50am** - £2 per session. This is offered daily to morning nursery and reception.
- After school **childcare** club from the end of school day until 5.30pm **Mon – Thurs** - £7 per session per child. This is offered to Reception.

Parents must book children into after school care by letting the office staff know at least 1 day in advance.



School Nurse – Reception checks

During the year, reception aged children will have hearing and sight tests as well as height and weight checks. This is during school hours.

If there are any concerns the school nurse would write to parents to explain reasons why and offer their support.

Reception children are also due to have a flu jab this year and consent forms need to be returned quickly once sent.



Toileting

Ofsted guidelines state that every child should be able to go to the toilet independently by the **age of five**.

By the time children start Nursery at the **age of three**, we expect the majority of children to be dry most days.

By the **age of four** we would expect most children to be reliably dry.

If toilet training is something you would like support or advice with, or your child is having difficulties with toilet training then please feel free to speak to a member of the EYFS team who will be happy to help you.

Illness/Medication

If your child is unwell in school a member of staff will telephone you and ask you to collect your child as soon as possible. **Please ensure the school has your current phone numbers and let us know if you change your number.**

If your child is unwell at home, please let the school know. If your child has sickness or diarrhoea then they can NOT return to school for **48 hours**.

If your child has standby medicine, i.e. an Asthma inhaler, or EpiPen then please discuss this with the staff.

If your child is prescribed medicine, then this will be stored in a locked cupboard and administered by a designated adult as appropriate after completion of the relevant forms. Please note that if the medicine is prescribed for 3 times a day then we cannot administer this. If the medicine is for 4 or more times a day, then we are happy to do this. Medicine must have the child's name visible on the bottle or box with the required dosage.



Nursery Lending Library

We understand that children love stories and books and that they should be provided with lots of opportunities to look at and share books with adults. We have provided a "Lending Library" for Nursery children. This gives you and your child the opportunity to take books home to share and enjoy. When you have finished with the book, just bring it back and choose another.



Homework in Reception

The focus of homework in reception is on reading and learning the sounds that have been taught that week through our Sounds-Write program. (Meeting in Autumn term for parents) This will include:

- Sound books and reading diaries.
- Reading books and library books.
- Your child may receive other practical and play-based homework but this will be when it is appropriate for them.

Tapestry

At Delves Lane Primary school, we now use an exciting new learning platform in Early Years to share resources with you and your child online called **Tapestry**.

Once your child starts school, you will receive a link through your email address given to school, to set up your own log in details. There will also be a meeting in September to showcase this to parents and go through a few tutorials on how to access and use it.



Don't forget to check our website and Facebook page for all the up to date information you need:



www.delvelanepriamary.durham.sch.uk

Facebook search: Delves Lane Primary School



How you can help us

- Please provide your child in nursery with spare clothes in a named bag
- Please pay £1.00 school fund every week.
- Do not dress your child in good clothes – **they will get dirty!!**
- Put names in all pieces of clothing
- Do not allow your child to wear any jewellery. This includes stud earrings and watches.
- Children will be outside whatever the weather. Please ensure they are dressed appropriately for the weather.
- Please do not allow your child to bring toys from home.
- Please fill in your national insurance details to ensure your children receive free school meals.
- Reception children: Please ensure your child has their book bag in school every day with sound book, reading diary and reading books inside.
- **Read with your child whenever possible**



Thank you for reading our brochure. We look forward to welcoming and meeting you and we hope that your child has a happy, friendly and enjoyable time in our school.

